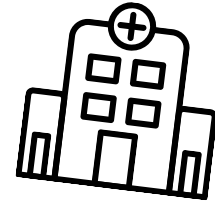


Name: \_\_\_\_\_

Date: \_\_\_\_\_



# Unsteady Teddy



## SPELLING WORKSHEET

Underline the correct spelling of the words in parentheses

I have a little teddy bear  
I like to (**hug, hog, hugg**) and hold.  
But, yesterday, I (**tolde, told, toll**) my mom,  
"I think he has a (**cold, cald, kold**)."

I said, "I heard him (**sniffel, sniffle, snifell**),  
and he seems to have a (**chill, chell, chil**).  
His forehead feels a little (**hott, hote, hot**).  
I swear my bear is (**ill, il, ile**)."

"Let's take him to the (**doctor, doktor, docter**)  
who can diagnose (**diseases, deseases, disieses**),  
and cure him of his sniffles  
and his (**shivers, shivvers, shiverrs**) and his sneezes."

My mother said, "Don't worry (**deer, dere, dear**).  
You might not be (**aware, awhare, aware**),  
but sniffles aren't uncommon  
in your average teddy (**bair, bare, bear**)."

She said, "His nose is (**runy, runny, roney**)  
and his eyes are red and (**puffy, puffey, puffe**).  
But I don't think he has a cold.  
He's just a little (**stufy, stuffie, stuffy**)."

— Kenn Nesbitt

